

CURATION REPORT

THECARCROWD VEHICLE APPRAISAL



CURATION REPORT

THECARCROWD VEHICLE APPRAISAL

Date. Inspection 08/01/26	Year/Manufacture 2003	VIN CT9A-0200354	Mileage 13068 M	
Make/Model Mitsubishi	Engine 1998 CC	Engine No.	Transmission 6-Speed Manual	Interior 10 / 10 The upgraded Ralliart seats, upholstered in black/red fabric, are in excellent condition, with all mechanical and electrical functions fully operational. The floor mats mirror the overall well-maintained state of the car. Similarly, the interior trim, roof lining, and rear sections exhibit an equally impressive level of quality.
No. Manufactured Evolution VIII FQ-330	Service Manual Yes	Service History Record Fully Comprehensive Records		
	Service History Comprehensive Fully documented			
Configuration RHD/ LHD	HPI Clear YES	Restoration N/A	Import Status N/A	No. Owners 1

Assessors Notes

This Mitsubishi Evo VIII FQ330 presents in exceptional, true concours condition, both cosmetically and mechanically. Delivered new in 2003 and having covered just 13,068 miles from new, it has averaged an extraordinary 568 miles per year, placing it among the very finest examples in existence.

The car benefits from the desirable factory Ralliart upgrades, reinforcing its status as one of the most focused and collectible Evolutions produced. Its mileage is fully warranted and supported by a comprehensive service history, maintained exclusively by Mitsubishi main dealers until their UK withdrawal in 2016/17, and thereafter by former Ralliart technicians, ensuring continuity of specialist care throughout its life.

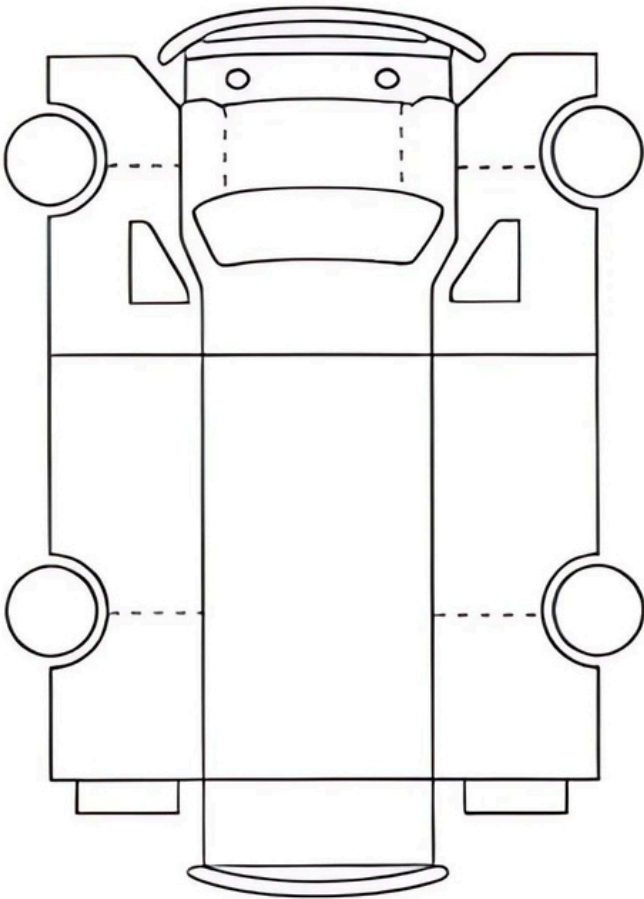
The exterior presents to an outstanding standard, with paintwork and bodywork retaining exceptional clarity and depth, free from stone chipping, blemishes or evidence of cosmetic correction. Panel fit, finishes and detailing remain exactly as intended from factory, reflecting careful ownership and correct storage.

Inside, the cabin is equally impressive, showing virtually no signs of wear. Trim, upholstery and switchgear remain crisp and original, with all electrical components operating exactly as they should.

Mechanically, the car performs flawlessly. The drivetrain, suspension and braking components show condition entirely consistent with its ultra-low mileage, with no unwanted noises or movement evident during inspection or road testing. The underside further reinforces the car's originality and careful preservation, presenting clean, unmarked and unrestored.

Accompanied by a strong history file and maintained to the highest standard throughout its life, this FQ330 represents a rare opportunity to acquire a reference-level example of a model widely regarded as one of the definitive modern performance icons.

Factory Equipment Full Original Factory Equipment with factory Ralliart upgrades
--



Recent MOT The MOT is a Government legislation requiring all motor cars to be checked to ensure safety and environmental compliance. It is carried out annually
13,068 Miles
Result TBC
Advisories N/A
Major N/A

KEY
L. Light Scratch
T. Stone Chip
S. Scratch/Dent with additional damage
P. Paintwork Required
R. Repair Marks
O. Overspray
D. Damage
C. Corrosion
M. Modification
X. Replaced
W. Webbing/Wheel Refurb

CURATION REPORT

THECARCROWD VEHICLE APPRAISAL

<div>Date. Inspection</div> <div>08/01/26</div>	<div>Year/Manufacture</div> <div>2003</div>	<div>VIN</div> <div>CT9A-0200354</div>	<div>Mileage</div> <div><div></div><div>1</div><div>3</div><div>0</div><div>6</div><div>8</div><div>M</div></div>					
<div>Bodywork</div> <div>The exterior presents in excellent condition, free from noticeable marks or dents. Panel alignment across the doors, bonnet, and boot is correct, with all Mitsubishi and Evolution badging remaining in very good original condition.</div>	<div>Trim</div> <div>The exterior trims are in excellent condition, showing no visible damage, wear, or corrosion. There is no evidence of overspray, and the metalwork presents to a high standard consistent with the vehicle's mileage.</div>	<div>Glass</div> <div>The glass is in excellent condition, with no visible scratches or chips observed at the time of inspection. All glazing appears to be original to the Mitsubishi Lancer Evolution VIII FQ-330 and retains the correct manufacturer markings.</div>	<div>Interior</div> <div>The black Recaro seats in this Evo VIII FQ-330 are presented in outstanding condition, with all mechanical and electrical functions operating flawlessly. The floor mats reflect the car's overall well-preserved state, while the interior trim, roof lining, Alcantara surfaces, and rear seating area all maintain an equally high standard of quality.</div>			<div>Engine Components</div> <div>All major engine components were reported to be in good working order at the time of inspection. The accompanying service history indicates regular maintenance carried out by recognised main dealers and marque specialists, reflecting consistent and attentive care. The vehicle has also benefited from a recent service, further supporting its well-maintained mechanical condition.</div>		
<div>Paint</div> <div>The paintwork presents exceptionally well and is believed to be largely original, with a consistent finish throughout and no obvious defects noted. The car retains its correct factory appearance, highlighting the desirability of the FQ-330 specification.</div>	<div>Seals</div> <div>The seals are in excellent condition, with no visible damage, wear, or corrosion observed during the inspection. There is no evidence of perishing or weather-related damage on any of the rubber components or sills</div>	<div>Tyres</div> <div>4x brand new tyres recently fitted to the car replacing those that came from factory 23 years ago. These new tyres are believed to be of the last available matching the original specification.</div>	<div>Engine Bay</div> <div>Engine bay in great condition reflecting the true mileage and the care taken under previous ownership. No signs of wear or damage. Remains in original, factory configuration with no modifications other than those carried out at factory by ralliart.</div>			<div>Wheels</div> <div>The factory alloy wheels sit well within the arches and complement the Evo VIII FQ-330's purposeful stance. The car is equipped with its original braking system, which presents in excellent condition, showing minimal signs of wear or scoring and reinforcing the car's largely original and well-preserved specification.</div>		

CONDITION REPORT

Bodywork					>>>	4.7
Paint					>>>	4.8
Trim					>>>	4.8
Seals					>>>	4.8
Glass					>>>	4.9
Tyres					>>>	4.8
Interior					>>>	4.8
Engine Bay					>>>	4.9
Engine Components					>>>	4.8
Wheels					>>>	4.8

GRADE 5 (Concours) - vehicles are the best in the world. The visual image is of the best car, unmodified and in the right colours.

GRADE 4 (Excellent) - cars could win a local or regional show. They can be former **Grade 5** cars that have been driven or have aged. Seasoned observers will have to look closely for flaws.

GRADE 3 (Good) - cars could possess some, but not all of the issues of a **Grade 2 or 1** car, but they will be balanced by other factors such as a fresh paint job or a new, correct interior.

GRADE 2 (Fair) - cars are daily drivers, with flaws visible to the naked eye. The chrome might have pitting or scratches, the windshield might be chipped.

GRADE 1 (Need Attention) - vehicles have seen better days. Require repair or restoration and are not road worthy.

GRADE AVG.
4.81/5

MARKET REPORT

GRADE 5 £46,200.00	GRADE 4 £37,100.00	GRADE 3 £28,300.00	GRADE 2 £16,100.00	GRADE 1 £9,100.00
------------------------------	------------------------------	------------------------------	------------------------------	-----------------------------

Using our proprietary software, combined with live market analysis and past sales performance, our expert curation team produce a valuation which is used both as the assets live market valuation (updated every quarter) as well as being underwritten by our insurance company. This value can also be categorised as the replacement value used to insure the assets under our bespoke classic vehicle policy with Kingfisher insurance.

INSURANCE VALUE
£43,900.00